



Dear Care Team Members,

Happy May!

We have some exciting highlights this month, including the upcoming Dementia Toolkit event on May 13 also known as Quarterly Connection 2. It's a fantastic opportunity to learn and grow together. Dementia touches most of our lives eventually, and it's still our number one most requested training topic. We'd love for you to sign up and join us! Your participation makes a huge difference.

Also take a look at page 5 for information on RSVP's Senior Tech Skills event. It looks like a great opportunity and would count toward your Care Team hours.

Lastly, we've got a beautiful new Care Team video to share with you. We thank Ginny, Karen, Jacob and Will for giving such inspiring testimonies! Please check it out on our Youtube channel link on page 3.

We appreciate all you do!

Judi & Melissa



## Self-care reminder: **Delegate**

Handing off tasks to others helps them feel more involved and trusted. It boosts team productivity, helps volunteers learn new skills, and keeps things running smoothly when leaders are away. Plus, it takes some pressure off leaders who give so much.



St Thomas Aquinas 2005

St Ann 2008

Epiphany of the Lord 2011



Catholic Charities  
Diocese of Madison

CARE TEAM MINISTRY

# QUARTERLY CONNECTION 2

# DEMENTIA TOOLKIT

Increasing numbers of Wisconsinites with Alzheimer's disease and related dementias (ADRD) are living in the community, rather than in care facilities. Family members, care and service providers and other community members may find it difficult to meet the needs and honor the personhood of those living with dementia.

In this highly interactive workshop, participants will have the opportunity to role-play our dementia-friendly simulations. Our simulations make use of equipment designed to provide participants with a greater understanding of the challenges faced by people with dementia. We will discuss strategies to communicate clearly with the person with dementia, to support the person with dementia as a family caregiver or service provider, and to challenge the stigma and isolation that people with dementia and their family members often face.

Learn more about the Center for Aging Research and Education at the University of Wisconsin-Madison School of Nursing: <https://care.nursing.wisc.edu/>



DIANE FARSETTA  
CARE Manager



PAULA BIZOT  
CARE Aging Education  
Project Manager

Tuesday, May 13  
12:00pm to 1:30pm

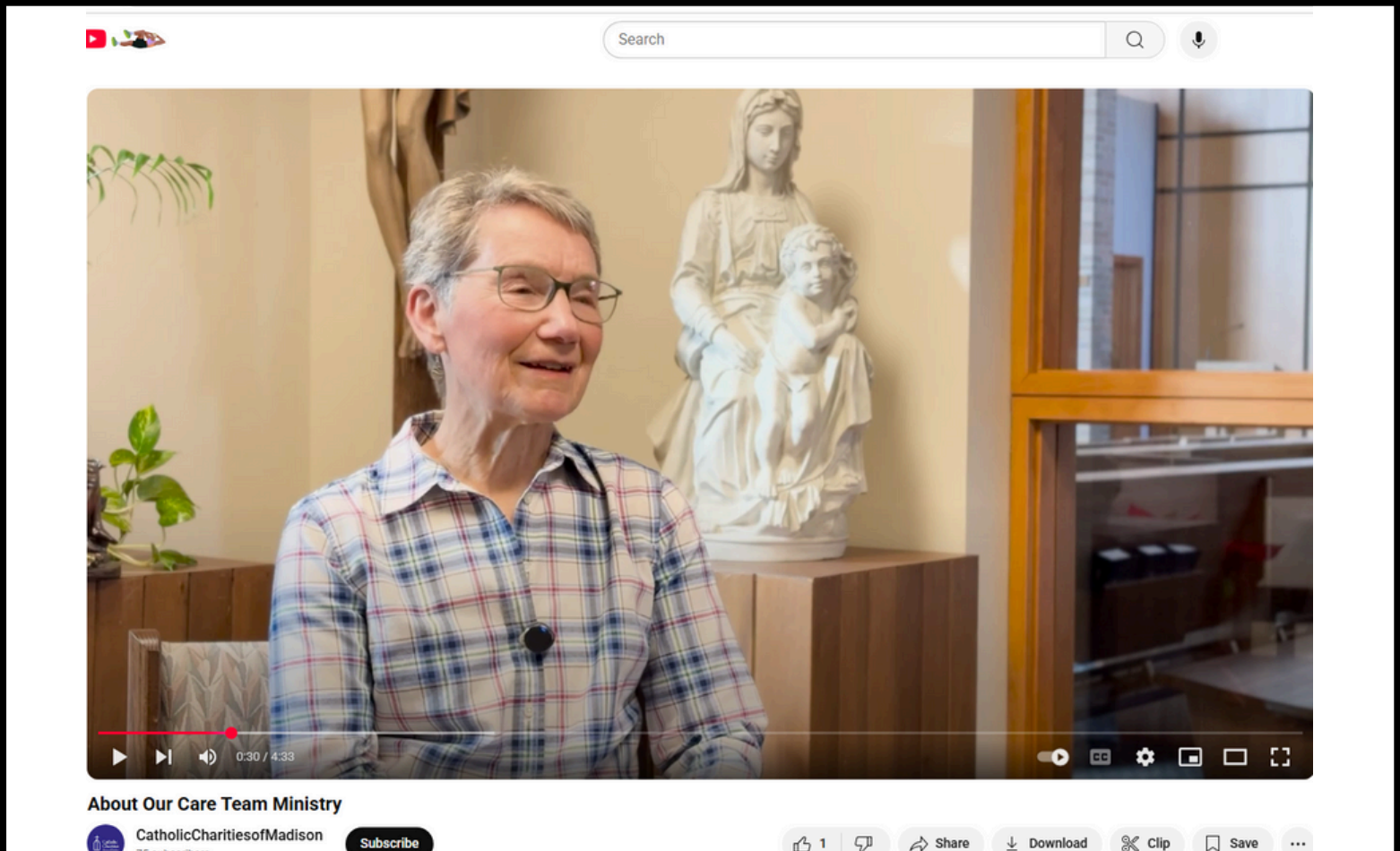
Venue:  
Midvale Community  
Lutheran Church  
4329 Tokay Blvd  
Madison, WI 53711



**REGISTER**  
**BEFORE MAY 5**

Check out our new video and share with friends!

[CLICK HERE](#)



Let us know if we can help you  
use this video in your parish.



The Mazzuchelli Care Team at Divine Mercy Pastorate recently hosted a potluck during their April monthly meeting to foster relationships and unity. A heartfelt thank you to Marla Thole, our Care Team leader, and all the dedicated and compassionate team members.



Primrose Lutheran Care Team celebrated their anniversary last month with a skeleton crew.

We'll have to get another group photo with the whole team, but this is lovely for now.



# Transportation Services

[CLICK HERE](#)

Dane County Department of Human Services provides transportation resources and services that enable seniors, persons with disabilities, veterans, workers, refugees, low-income families, and others to access their communities.

---



**SENIOR PLANET**  
FROM **AARP**  
**Tech Skills Classes**

[CLICK HERE](#)

## May 9 Senior Planet Tech Skills Class

Register now for our May 9 FREE in-person Senior Planet technology skills class for older adults. This session will focus on Google Workspace (Google's office suite) followed by a workshop focusing on Gmail Tips and Tricks. The class will be from 9:45 AM to 12:15 PM at the RSVP offices located at 6501 Watts Road, Suite 250, Madison.

In the first segment of the class, we'll learn about some of Google's most popular productivity tools that are for personal use, as well as work-related ones. This lecture will introduce Docs, Sheets, Slides, Photos, and Drive. We'll explore some practical and creative uses and demonstrate how to make the most out of Google's many free templates.

The second segment will go beyond sending and receiving with this hands-on workshop about Gmail features! This workshop will cover important features like spellcheck, formatting emails, searching your inbox, adding a signature, and attaching files. The session will combine demonstration and hands-on practice, so that you'll have plenty of opportunities to ask questions and try out these features.

There is one prerequisite: you must have a Gmail address and be somewhat comfortable navigating the internet. Bring your Gmail username and password and be ready to sign in during the workshop. If you don't have a Gmail account, set one up for at least this class.

Space is limited to 10 participants, so please register only if you are very certain you will attend. When registrants do not show up, it prevents someone else from attending and benefiting from the class. We will have coffee, tea, and donuts starting at 9:45 AM, with the class commencing promptly at 10:00 AM. A light lunch will be served at 12:15 PM. You can register by clicking [HERE](#). The class is available online from time to time at [SeniorPlanet.org](http://SeniorPlanet.org).

Thank you to the Rotary Club of Madison for awarding us an Innovation Grant to help us get this program started. Also, thank you to Senior Planet for working with us to make RSVP a Senior Planet training center.



## A message from the Program Manager of our Adult Day Center



Want to make a difference and meet some awesome people along the way? We're looking for passionate, reliable volunteers to help with garden club, active sports, arts and crafts, games, and special music entertainment or hobby. Whether you have an hour or a day or maybe more, your time makes a big impact. Interested? Reach out to Kaitlin Simmons at [ksimmons@ccmadison.org](mailto:ksimmons@ccmadison.org) or at 608-826-8001. We'd love to have you on the team!

This might be a fun extra-curricular activity for your Care Team to spend time as a group. Some Care Teams hold social events in residential facilities to enrich the lives of all who participate whether they are official Care Partners or not. Give us a call if you want to talk about how this might work as a group activity for your team. Contact Kaitlin directly if you or someone you know wants to volunteer as an individual.